

## REMOVAL

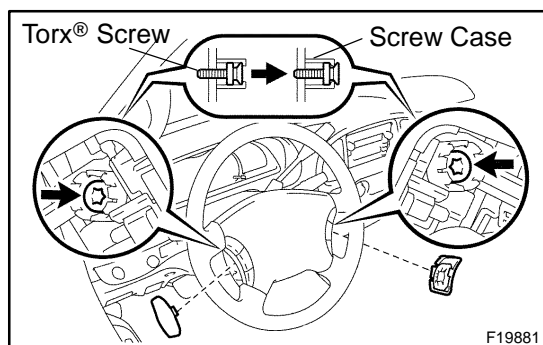
### 1. DISCONNECT CABLE FROM NEGATIVE BATTERY TERMINAL

Wait for 90 seconds after disconnecting the cable to prevent the airbag working.

### 2. REMOVE STEERING WHEEL PAD

#### NOTICE:

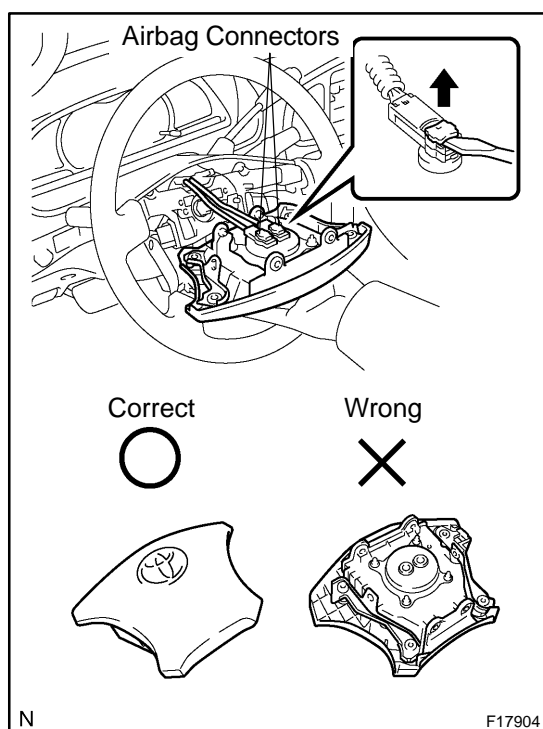
If the airbag connector is disconnected with the ignition switch in the ON or ACC position, DTCs will be recorded.



- Place the front wheels facing straight ahead.
- Remove the steering wheel lower No. 2 cover.
- Remove the steering wheel lower No. 3 cover.
- Using a torx® socket wrench, loosen the 2 torx® screws.

#### HINT:

Loosen each screw until the groove along the screw circumference is caught on the screw case.



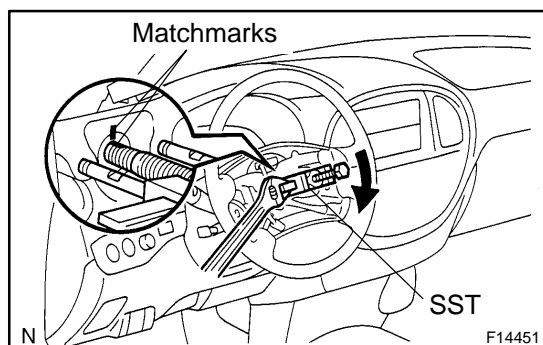
- Pull out the wheel pad from the steering wheel and disconnect the airbag connectors and horn terminal.

#### CAUTION:

- When storing the wheel pad, keep the upper surface of the pad facing upward.
- Never disassemble the wheel pad.

#### NOTICE:

When removing the wheel pad, take care not to pull the airbag wire harness.



### 3. REMOVE STEERING WHEEL

- Remove the steering wheel set nut.
- Put matchmarks on the steering wheel and main shaft assembly.
- Using SST, remove the wheel.  
SST 09950-50013 (09951-05010, 09952-05010, 09953-05020, 09954-05021)
- Disconnect the connector.

**4. REMOVE UPPER AND LOWER COLUMN COVERS**

Remove the 3 screws, upper and lower column covers.

**5. REMOVE COMBINATION SWITCH WITH SPIRAL CABLE**

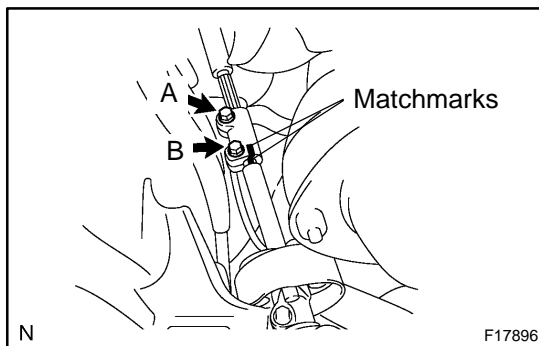
- (a) Disconnect the 4 connectors.
- (b) Disconnect the airbag connector.
- (c) Remove the 3 screws and combination switch.

**6. REMOVE SPIRAL CABLE (See page [BE-40](#))****NOTICE:**

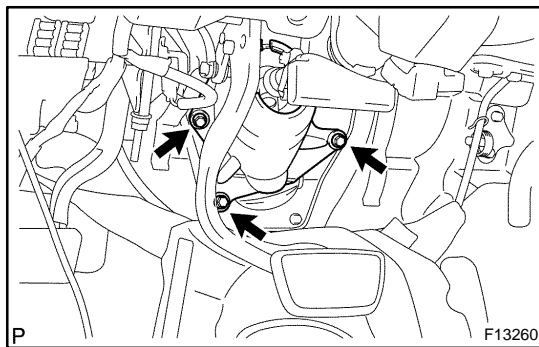
**Do not disassemble the cable or apply oil to it.**

**7. REMOVE LOWER LH FINISH PANEL**

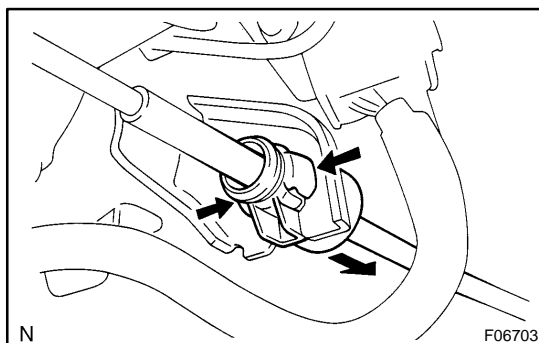
- (a) Remove the 2 screws and disconnect the hood lock release lever from the panel.
- (b) Remove the 4 panel set bolts and lower LH finish panel.

**8. REMOVE NO. 2 HEATER TO REGISTER DUCT****9. REMOVE BRAKE PEDAL RETURN SPRING****10. REMOVE SLIDING YOKE**

- (a) Put matchmarks on the sliding yoke and No. 2 intermediate shaft assembly.
- (b) Remove the "A" bolt.
- (c) Remove the "B" bolt.
- (d) Slide the sliding yoke and remove it.

**11. REMOVE COLUMN HOLE COVER NO. 2**

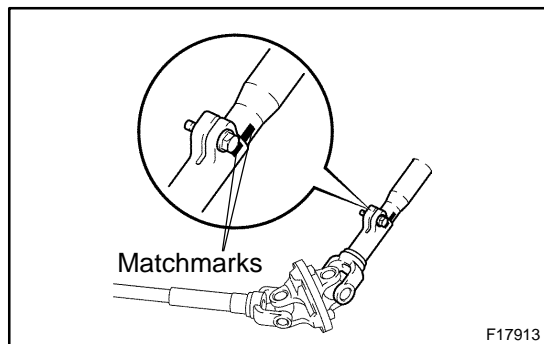
Remove the 3 bolts and column hole cover No. 2.

**12. DISCONNECT TRANSMISSION CONTROL CABLE ASSEMBLY**

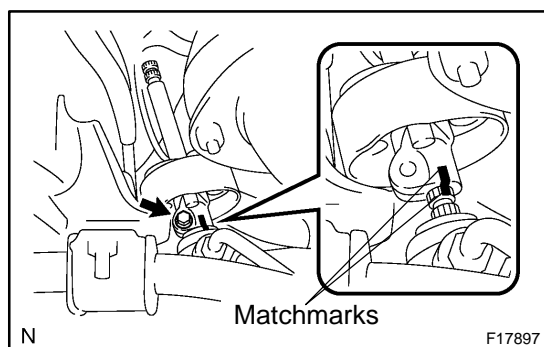
Disconnect the cable assembly from the column shift lever assembly.

**13. REMOVE STEERING COLUMN ASSEMBLY WITH NO. 2 UNIVERSAL JOINT ASSEMBLY**

- (a) Disconnect the connectors.
- (b) Remove the 4 steering column set nuts.
- (c) Pull out the steering column assembly with the No. 2 universal joint assembly.

**14. DISCONNECT NO. 2 UNIVERSAL JOINT ASSEMBLY**

- (a) Put matchmarks on the steering column assembly and No. 2 universal joint assembly.
- (b) Remove the bolt and No. 2 universal joint assembly.

**15. REMOVE NO. 2 INTERMEDIATE SHAFT ASSEMBLY**

- (a) Put matchmarks on the No. 2 intermediate shaft assembly and control valve shaft.
- (b) Remove the bolt and No. 2 intermediate shaft assembly.